

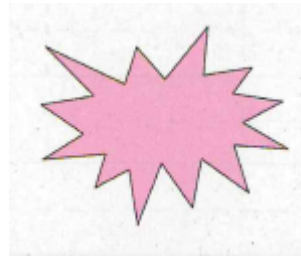
Letters S/A/T/P Revision



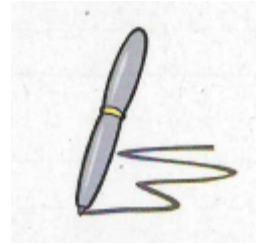
___ot



___in



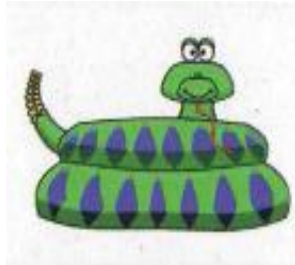
___ink



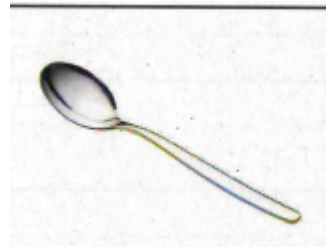
___en



___it



___nake



___poon



___un



___iger



___en



___ap



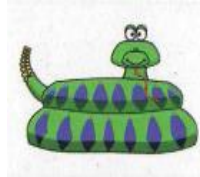
___ree

Match the picture with the word

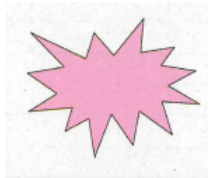
pink



tiger



pot



snake



Match the picture with the word

tap



pin



ten



spoon



Write the word under the picture

ant

apple

arrow

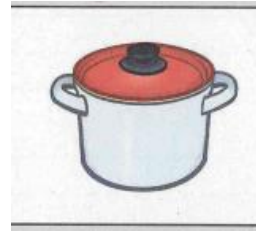
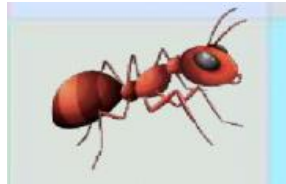
snake

pin

pot

tap

ten





Circle the correct word

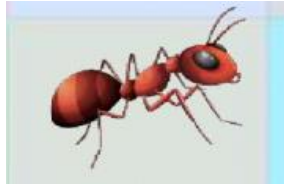
Sun/spoon



axe / apple



apple/ ant



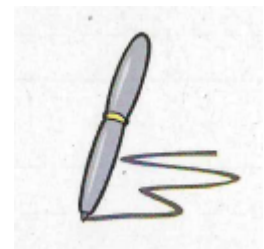
pin / pen



tap / ten



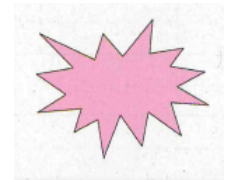
pin / pen



tiger / tree



pin / pink



Match the capital letter to the small one

A

s

S

t

T

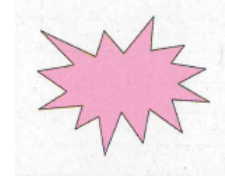
p

P

a

Write the small letter and match

A



S



T



P

